

PRODUCT DESCRIPTION

- Elastic cover dedicated to the 3035 extrusion

Fill empty fields

Product nr.

Fixture type

Company

Job name

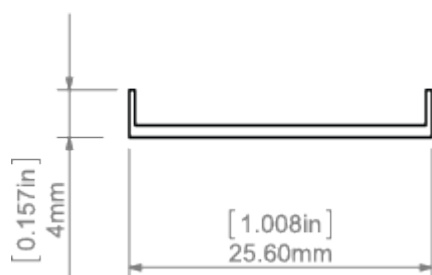
Date



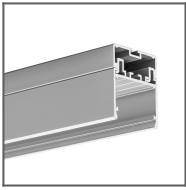
TECHNICAL SPECIFICATION

| | |
|------------------|---------------------------|
| Material | PC |
| Available length | 1000 mm, 2000 mm, 3000 mm |
| UV resistance | increased |

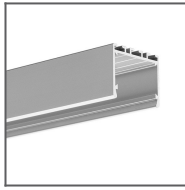
TECHNICAL DRAWING



RELATED PROFILES



3035 Profile
Ref: 18039



3035-O Profile
Ref: B8441