

**PRODUCT DESCRIPTION**

A component for easy mounting of a lightweight lighting fixture to the surface. It is made of plastic and has a screw hole as well as flexible "wings" acting as a holder for the fixture. It is compatible with most standard extrusions.

Fill empty fields

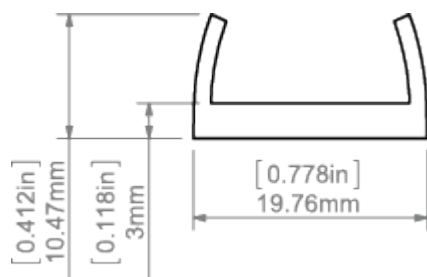
Product nr.

Fixture type

Company

Job name

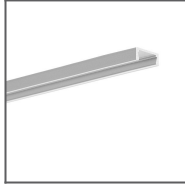
Date

**TECHNICAL SPECIFICATION****TECHNICAL DRAWING**

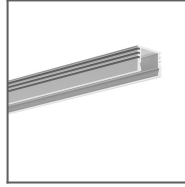
**RELATED PROFILES**



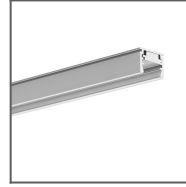
45-16 Profile  
Ref: B8504



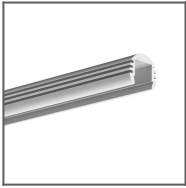
MICRO-ALU Profile  
Ref: B1888



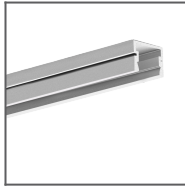
PDS-4-ALU Profile  
Ref: B1718



REGULOR Profile  
Ref: B468+43



PDS-O Profile  
Ref: B3777



PDS-4-PLUS  
Profile  
Ref: C1263