

Specification

Model : RN6860TA /RN68C0TA

Description:

RN6860TA: 5000*8, 300pcs 2835 SMD LEDs, silica gel injected series, constant voltage 12Vdc, LED flexible strip

RN68C0TA: 5000*8, 600pcs 2835 SMD LEDs, silica gel injected series, constant voltage 12Vdc, LED flexible strip

Prepared by : _____

Checked by : _____

Standard Dept : _____

Approved by : _____

Issued Status: Draft Published

Specification

Product Name: LED Flex Strip

Model: RN6860TA/
RN68C0TA

RN6860TA



RN68C0TA



Applications

Suitable for indoor use, such as in KTV, shopping mall, cabinet etc. as cove and contour lighting.

Bending radius ≥ 5 cm, not suitable for channel letter application.

Features

1. 2835 SMD LEDs mounted;
2. Can be cut at the printed marks;
3. CE, RoHS compliant.

Installation

Easy installation with self-adhesive back.

Warranty

3 years or 13000 hours, whichever comes first.

Optical and Electrical Parameters:

P/N	LED Color	Color Temperature (K) Wavelength(nm)	Beam Angle (°)	Luminous Flux (lm/m)	CRI	Luminous Efficacy (lm/W)	Working Voltage (V DC)	Working Current (mA)		Power (W)	
								1m [39.37in]	5m [196.85in]	1m [39.37in]	5m [196.85in]
RN6860TA-B	Pure White	6000	115	352	≥ 75	64	12	458	1500	5.5	18
RN6860TA-B	Cold White	9000	115	325	≥ 75	59	12	458	1500	5.5	18
RN6860TA-B	Red	620-625	115	43	—	8	12	458	1750	5.5	21
RN6860TA-B	Green	525-530	115	177	—	32	12	458	1500	5.5	18
RN6860TA-B	Blue	465-470	115	49	—	9	12	458	1500	5.5	18
RN6860TA-B	Yellow	585-590	115	26	—	5	12	458	1750	5.5	21

RN68C0TA-B	Pure White	6000	115	562	≥7 5	65	12	717	2667	8.6	32
RN68C0TA-B	Cold White	9000	115	519	≥7 5	60	12	717	2667	8.6	32
RN68C0TA-B	Red	620-625	115	67	—	8	12	717	2917	8.6	35
RN68C0TA-B	Green	525-530	115	289	—	34	12	717	2667	8.6	32
RN68C0TA-B	Blue	465-470	115	84	—	10	12	717	2667	8.6	32
RN68C0TA-B	Yellow	585-590	115	39	—	5	12	717	2917	8.6	35

Others:

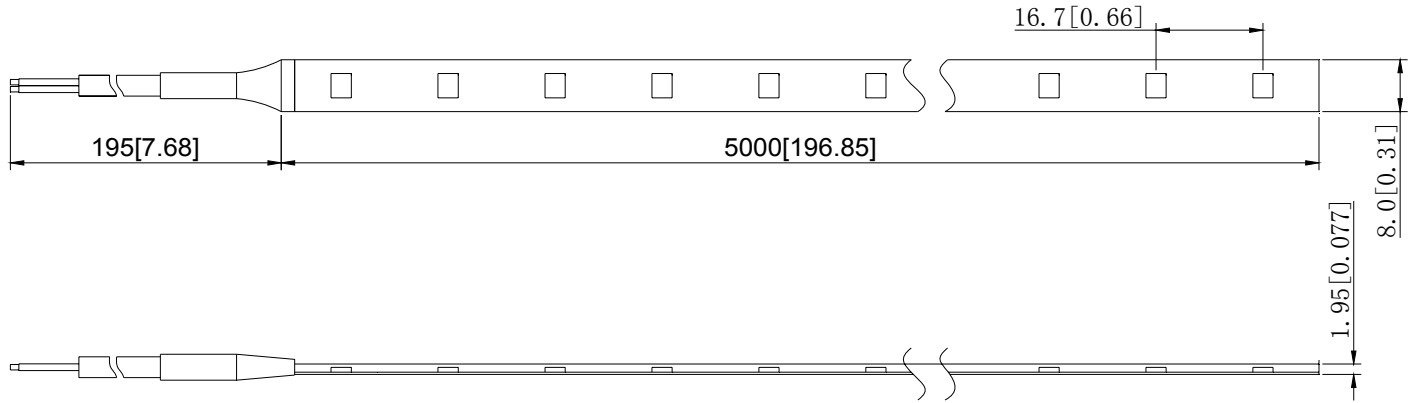
P/N	LED Color	Standard Length		Max. cascading Length		LED Qty (pcs/ m)	Operating Temperature		Storage Temperature		IP Grade
		(m)	(in)	(m)	(in)		(°C)	(°F)	(°C)	(°F)	
RN6860TA-B	White, R, G, B, Y	5	196.85	5	196.85	60	-25~+60	-13~+14 0	-25~+70	-13~+158	IP65
RN68C0TA-B	White, R, G, B, Y	5	196.85	5	196.85	120	-25~+60	-13~+14 0	-25~+70	-13~+158	IP65

Notes:

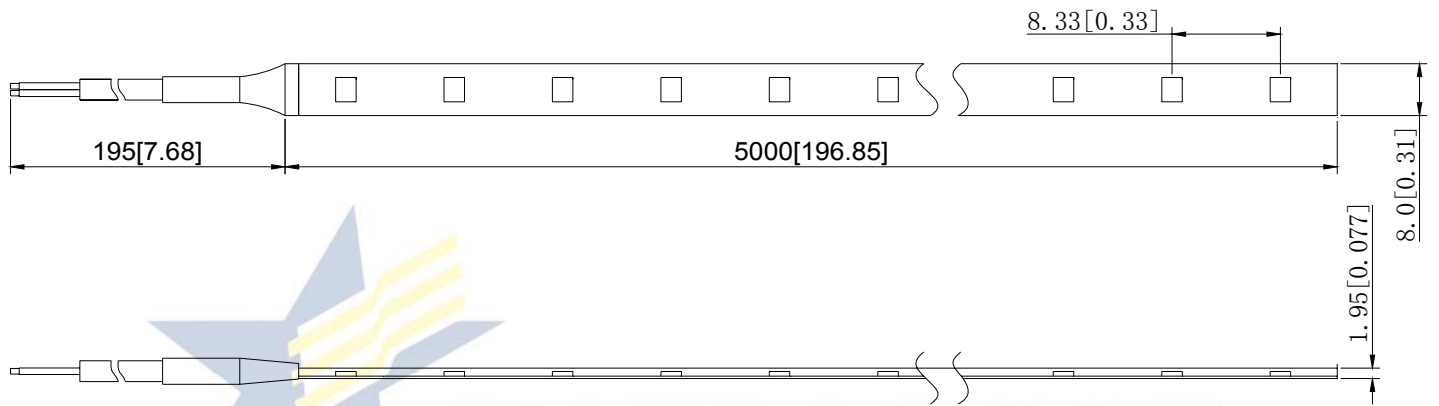
- ① Testing environment temperature: 25±2°C [77±3.6°F];
- ② The actual data of each single product may differ from above typical data which are subject to change without prior notice;
- ③ Above CCT is derived from bare LED, which might be changed slightly due to refraction of pouring sealant, thus for final CCT please refer to actual samples;

Profile Drawings:

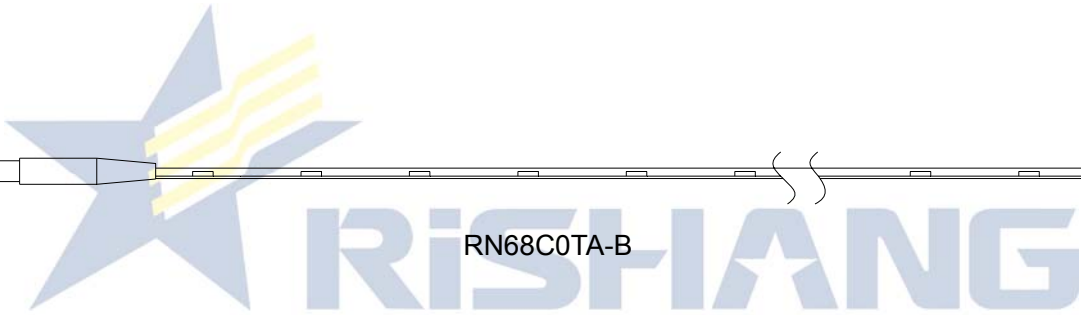
Unit: mm [in]



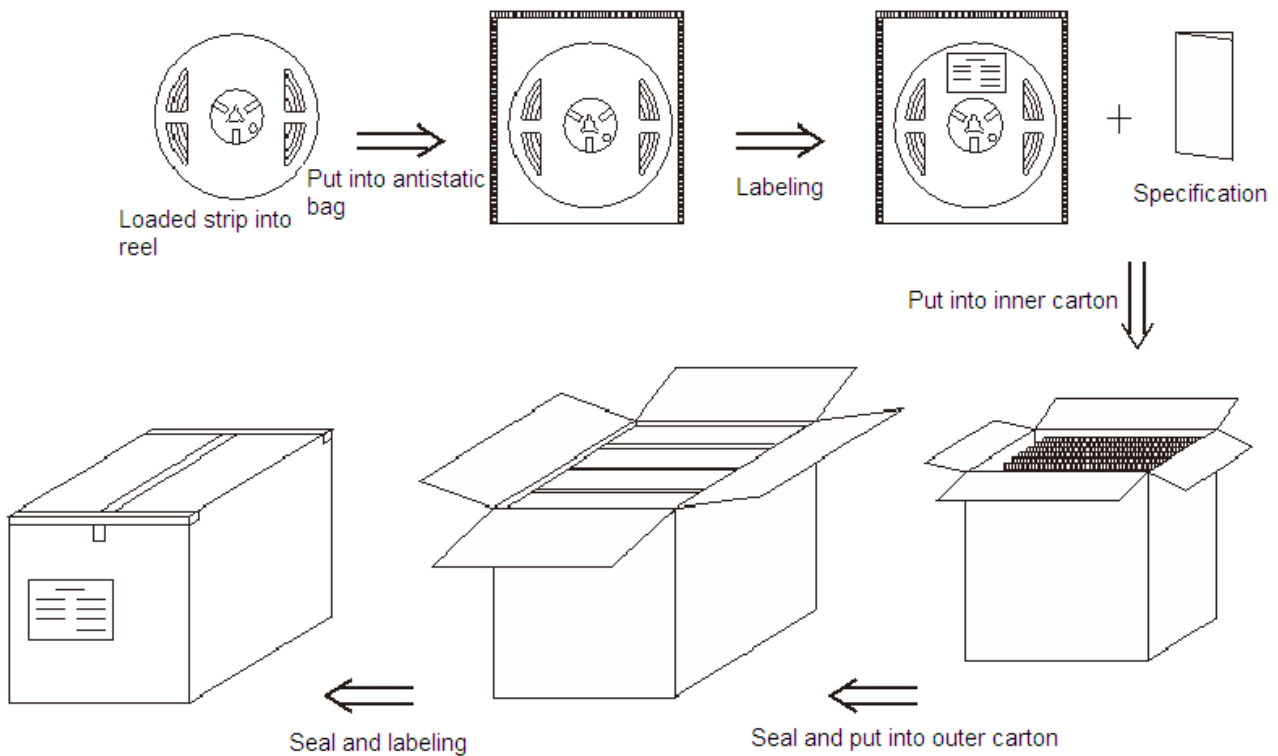
RN6860TA-B



RN68C0TA-B



Packaging Diagrams:



Packaging Information:

RN6860TA-B:

1. Rolling this product into plastic reel and put into antistatic bag and then packaged into double-deck corrugated carton;
2. Outer carton: 39*25*22.6cm =0.0220 (1±10%) CBM [15.35*9.84*8.89in]; inner carton: 23*18.6*19.6cm = [9.05*7.32*7.71in];
3. 5m [196.85in] per reel, 20 reels per inner carton (5mX20=100m), 2pcs inner cartons per outer carton (100mX2=200m), 1pcs specification in each inner box;
4. Net Weight (N.W) : 4.85 (1±10%) kg [10.69 (1±10%) lb];
5. Gross Weight (G.W) : 6.90 (1±10%) kg [15.21 (1±10%) lb];
6. The actual packed quantity and weight may subject to change without prior notice.

RN68C0TA-B:

7. Rolling this product into plastic reel and put into antistatic bag and then packaged into double-deck corrugated carton;
8. Outer carton: 39*25*22.6cm =0.0220 (1±10%) CBM [15.35*9.84*8.89in]; inner carton: 23*18.6*19.6cm = [9.05*7.32*7.71in];
9. 5m [196.85in] per reel, 20 reels per inner carton (5mX20=100m), 2pcs inner cartons per outer carton (100mX2=200m), 1pcs specification in each inner box;
10. Net Weight (N.W) : 5.63 (1±10%) kg [12.41 (1±10%) lb];
11. Gross Weight (G.W) : 7.68 (1±10%) kg [16.93 (1±10%) lb];
12. The actual packed quantity and weight may subject to change without prior notice.